

Parker Jackes-Evans



Hot Water & Steam
Solenoid Valves

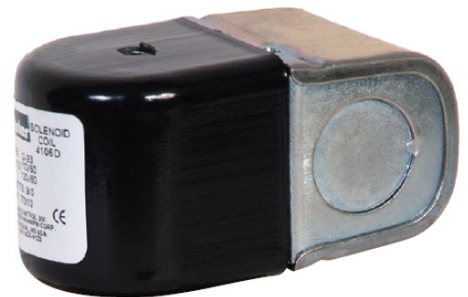
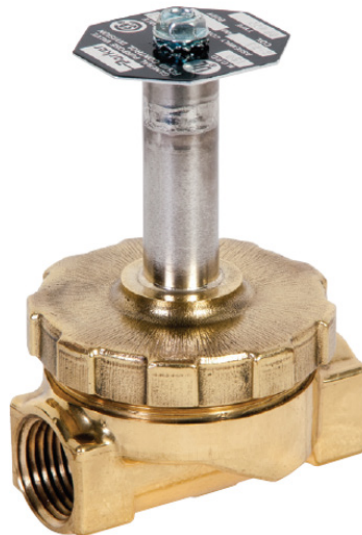


Customer Value Proposition:

Parker Jackes Evans (JE®) brand water, hot water & steam solenoid valves represent the “gold standard” in diverse industrial and commercial applications.

Robust and debris tolerant internals, including an integrated screen & strainer, and stainless steel seat facilitate long life and overall system health.

The full-ported design and pivoted-edge diaphragm construction deliver high flow rates in a compact footprint, low pressure drop, and reliable leak-free performance.



Parker Hannifin Corporation
Fluid Control Division
95 Edgewood Avenue
New Britain, CT 06109

phone 860 827 2300
fcdsales@parker.com

www.parker.com/fcd

Product Features:

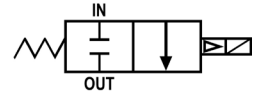
- Full-ported, high-flow design
- Low pressure drop
- Debris tolerant
- Integrated screen and strainer
- Long-life design
- Compact footprint
- Simple maintenance
- Modular coil and pressure vessel



ENGINEERING YOUR SUCCESS.

2-Way Normally Closed - Brass

“GP Series” Water & Steam Solenoid Valves



	Port Size	Orifice Dia.	Flow Factor	Operating Pressure Differential (MOPD) psi			Power	Max. Media Temp.	Seal Materials*	Model Number	Ordering No.
	NPT	Inch	Cv	Min.	Water	Steam	Watts (AC/DC)	°F			Pressure Vessel Only
AC DC	3/8	1/2	3.35	1	150	-	9 / 14	225	NBR, FKM, NBR	GP300	70392
	3/8	1/2	3.35	1	150	10	9 / 14	240	PTFE, FKM, EPDM	GP307	70393
	3/8	1/2	3.35	1	150	10	9 / 14	240	PTFE, EPDM, EPDM	GP327	70404
	3/8	1/2	3.35	1	150	50	9 / 14	300	EPDM (all)	GP357	70394
	1/2	1/2	3.35	1	150	-	9 / 14	225	NBR, FKM, NBR	GP400	70562
	1/2	1/2	3.35	1	150	10	9 / 14	240	PTFE, FKM, EPDM	GP407	70563
	1/2	1/2	3.35	1	150	10	9 / 14	240	PTFE, EPDM, EPDM	GP427	70586
	1/2	1/2	3.35	1	150	50	9 / 14	300	EPDM (all)	GP457	70564
	3/4	3/4	7.40	1	150	-	9 / 14	225	NBR, FKM, NBR	GP600	70712
	3/4	3/4	7.40	1	150	10	9 / 14	240	PTFE, FKM, EPDM	GP607	70713
	3/4	3/4	7.40	1	150	10	9 / 14	240	PTFE, EPDM, EPDM	GP627	70742
	3/4	3/4	7.40	1	150	50	9 / 14	300	EPDM (all)	GP657	70714
	1	1	12.20	1	150	10	9 / 14	240	PTFE, FKM, EPDM	GP1007	70808
	1	1	12.20	1	150	50	9 / 14	300	EPDM (all)	GP1057	70777
	* Order of Seal Material Listings: Diaphragm, Plunger Seal, Tetra Seal										



Solenoid Coils

“G-23” & “G-23S” Solenoid Coils for GP Series Valves

G-23 & G-23S	Ordering No.	Voltage	Electrical Termination
 77310	77310	120/60, 110/50	Junction Box w/ 6" Leads (2)
	73144	120/60, 110/50	Junction Box w/ 48" Leads (2)
	73178	120/60, 110/50	Junction Box w/ 36" Leads (2)
 77360	77320	240/60, 208/50	Junction Box w/ 6" Leads (2)
	77360	240/60, 120/60	Multi-Volt, Junction Box w/ 6" Leads (4)
	77300	24/50-60	Junction Box w/ 6" Leads (2)
	77370	12/60	Junction Box w/ 6" Leads (2)
 77317	77311	120/60, 110/50	1/2" NPT Conduit w/ 24" Leads (2)
	77312	120/60, 110/50	1/2" NPT Conduit w/ 36" Leads (2)
	77317	120/60, 110/50	1/2" NPT Conduit w/ 49" Leads (2)
 73136	73132	120/60, 110/50	Open Frame w/ Tab/ Spade Terminals
	73136	120/60, 110/50	Large Junction Box w/ Tab/ Spade Terminals
	73159	24/50-60	Large Junction Box w/ Tab/ Spade Terminals
	73142	240/60, 208/50	Large Junction Box w/ Tab/ Spade Terminals
 75520	75530	24 VDC (14 watts)	Open Frame Junction Box w/ 6" Leads (2)
	75520	12 VDC (14 watts)	Open Frame Junction Box w/ 6" Leads (2)

